



EU-CONEXUS Enables



Associated partners



The project brings together **10** partner universities and **8** associated partners across Europe to create sustainable synergies and develop long-term solutions for Smart urban coastal sustainability (SmUCS) using Digital Twin technologies.



| Project Data

Start date: 01/02/2024

End date: 31/01/2029

Funding: 4 966 092 Eur

Programme: HORIZON-WIDERA-
2023-ACCESS-03

Project number: 101136822



EU CONEXUS
ENABLES



**Funded by
the European Union**

| Project Aims

1 Develop long-term solutions for SmUCS based on the Digital Twin technologies.

2 Enhance skills, employability, and career prospects for researchers.

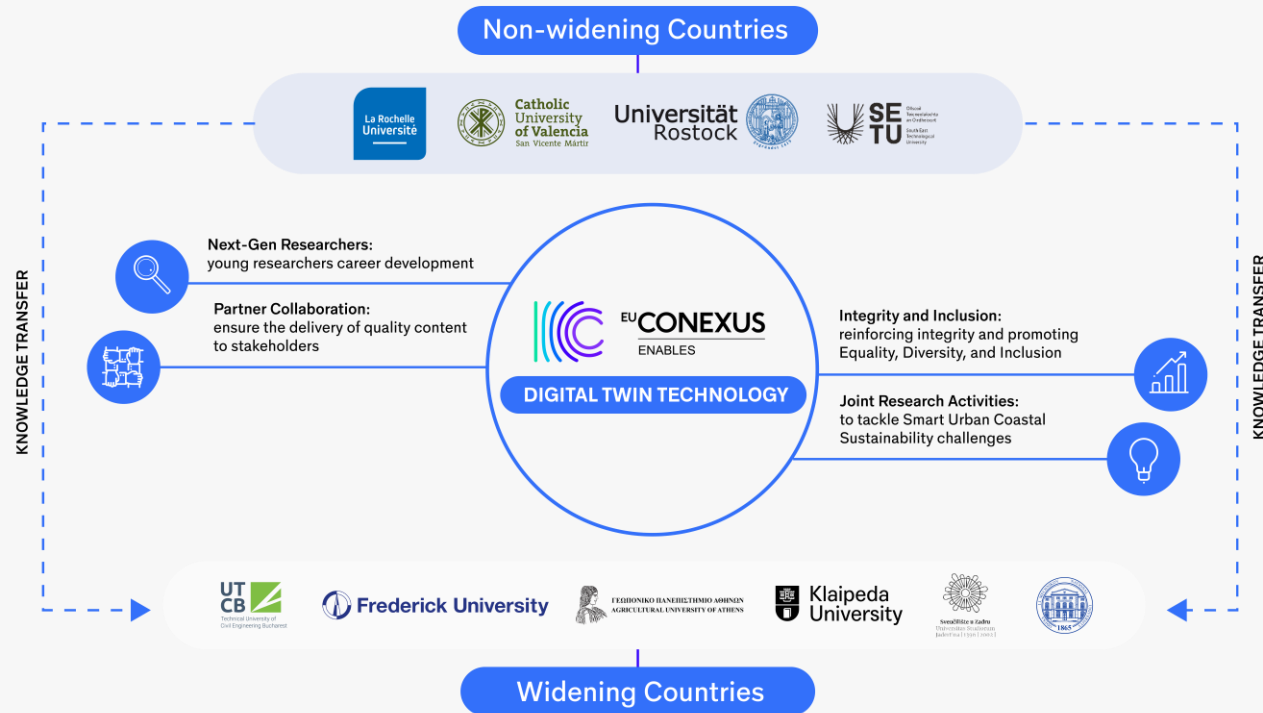
3 Elevate the quality of scientific endeavours, augmenting capacity within the European Research Area to address societal challenges, and improving interaction between science and society.

4 Increase engagement and cooperation of researchers with various stakeholders including communicators, journalists, industry, policymakers, and civil society.



Digital Twin Approach

Through the Digital Twin approach, we aspire to develop enduring solutions for Smart Urban Coastal Sustainability challenges. Key to our approach is the promotion of effective knowledge sharing, resource pooling, and joint efforts among all stakeholders.



Social partners contributing to the action:	<p>La Rochelle, France Reggie du Port de Plaisance de La Rochelle Communaute D'agglomeration de La Rochelle</p>	<p>Klaipeda, Lithuania City Development Agency Klaipeda ID</p>	<p>Bucharest, Romania Primaria Sectorului 2 Bucuresti</p>
	<p>Waterford, Ireland Southern Regional Assembly</p>	<p>Zadar, Croatia Zadar County</p>	
	<p>Athens, Greece Smart Agro Hub Anonymi Etairia Leivadia</p>	<p>Limassol, Cyprus Municipality of Limassol</p>	



Widening

Non-Widening



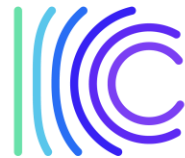
Traditio et Innovatio



Throughout the project, academic expertise, knowledge transfer, best practices, and research capacity building are redirected from **non-widening** to **widening** countries.



Project Activities



EU CONEXUS
ENABLES





Multidisciplinary Work Group and Strategies Focused on SMuCS and Digital Twin



Key Actions:

- Identify challenge-based topics with a focus on SMuCS.
- Establish challenge-based needs addressed by Digital Twin solutions.
- Prioritize research topics focused on SMuCS and Digital Twins.
- Select existing data-intensive Digital Twin models for adaptation to the project's goals.

As a result:



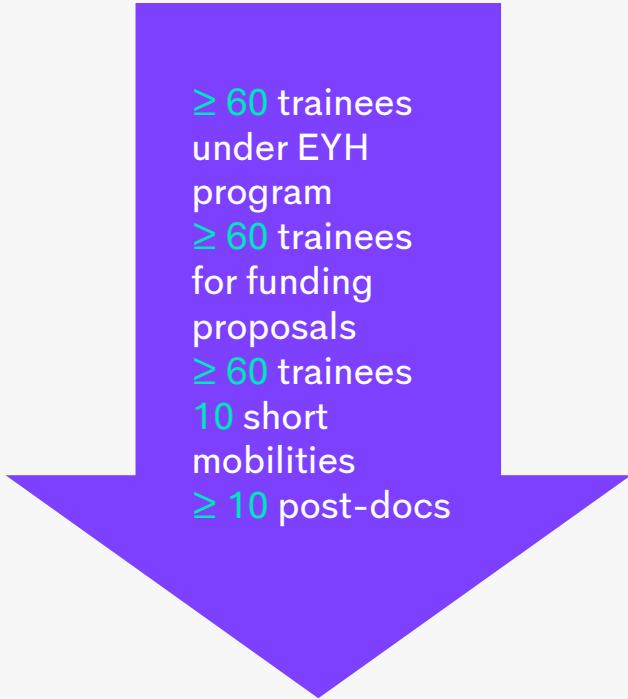


Research Career Development Support

Key Actions:

- Conduct a training needs analysis.
- Launch a researcher career development training program.
- Initiate training on funding proposal preparation and post-award management.
- Facilitate short-term mobilities for post-docs to meet their future supervisors.

As a result:



≥ 60 trainees under EYH program
≥ 60 trainees for funding proposals
≥ 60 trainees
10 short mobilities
≥ 10 post-docs





Stakeholder Exchanges



Key Actions:

- Organize hackathons to address challenges faced by the EU-CONEXUS network.
- Provide training, capacity building, and knowledge exchange opportunities for partner cities within the EU-CONEXUS network.
- Organize citizen participatory science activities.

As a result:



5 hackathons
5 trainings
5 coaching teams
5 events
≥ 6 webinars or workshops



Joint Research Activities



Key Actions:

- Select candidates for joint cotutelle grants to support the research projects of PhD students from widening countries.
- Select candidates for post-doc mobilities to facilitate short research stays at partner institutions.
- Form multidisciplinary teams across the alliance to explore new collaborative projects.

As a result:

5 PhD cotutelles exploited between widening and non-widening

5 post-docs mobilities implemented

≥ 5 micro-seeding grants proposed



Research Integrity and Gender Equality Consolidation



Key Actions:

- Support young female researchers.
- Provide peer mentoring for early-career researchers.
- Monitor research integrity and ethics.
- Organize training programs for researchers on Equality, Diversity, and Inclusion (EDI).

As a result:



≥ 30 mentees
for female
researchers
≥ 25 peer
mentees
≥ 60 trainees
at EDI training

Project Integration into the Alliance

EU-CONEXUS



JOINT STUDY PROGRAMMES



SMART CAMPUS



CAMPUS LIFE



MOBILITY



MANAGEMENT



GENDER EQUALITY &
NON DISCRIMINATION



INFRASTRUCTURE



EXTERNAL AND
INTERNATIONAL
RELATIONS

EU-CONEXUS ENABLES



RESEARCHERS' CAREER
DEVELOPMENT



JOINT RESEARCH
OUTPUTS



KNOWLEDGE TRANSFER



DIGITAL TWIN
TECHNOLOGY



Funded by
the European Union

Join us!

info@eu-conexus.eu

www.eu-conexus.eu/en/eu-conexus-enables/

Funded by the European Union. Views and opinions expressed are however those of the author(s) only and do not necessarily reflect those of the European Union or European Research Executive Agency. Neither the European Union nor the granting authority can be held responsible for them.